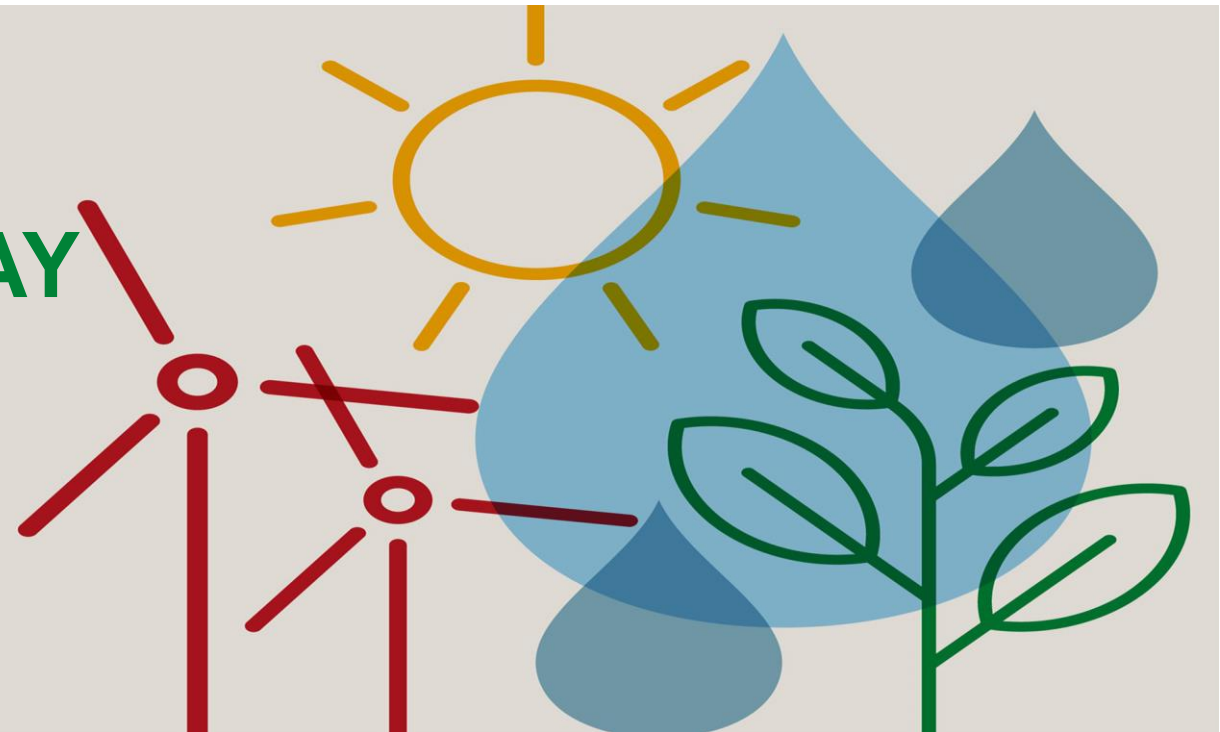


**WHAT IMPACT COVID  
ECONOMIC RESPONSE MAY  
HAVE ON CLIMATE  
ACTIONS FOR EMERGING  
ECONOMIES?**



# Outline

01

State of global economy and its impact on climate finance



02

Fiscal policy responses and opportunities for mainstreaming climate



03

Where do we go from here?



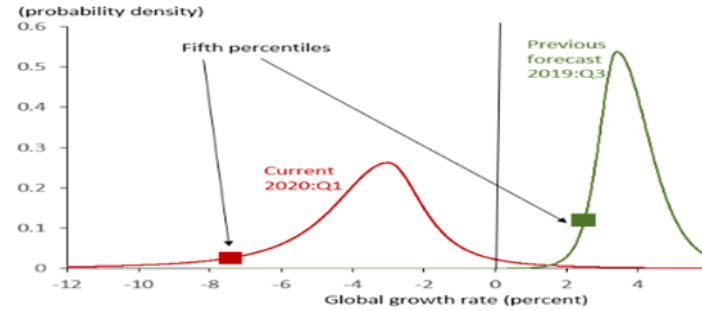
# Economy on Life Support

Output contraction by 3% with cumulative loss of US\$ 9 trillion

Capital outflow of 100\$ billion

Triple whammies: revenue & export loss, increased debt

**Global growth is at risk**  
The odds of global growth exceeding zero this year are now negligible.

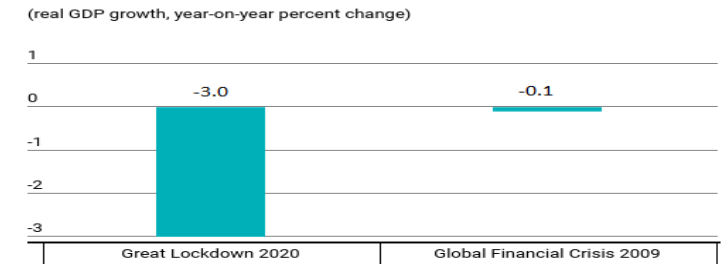


Source: IMF staff calculations.

INTERNATIONAL MONETARY FUND

1

**The Great Lockdown**  
The world economy will experience the worst recession since the Great Depression.

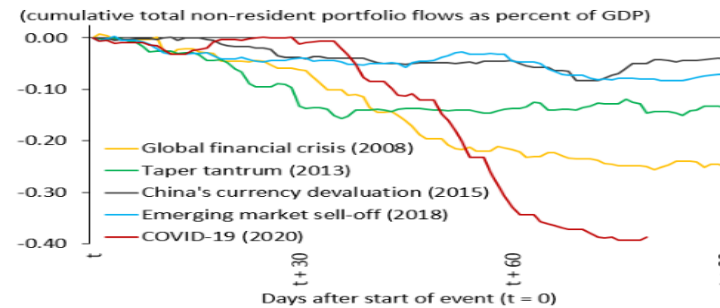


Source: IMF, World Economic Outlook.

INTERNATIONAL MONETARY FUND

2

**Unprecedented outflows**  
Emerging markets saw unprecedented portfolio outflows in terms of both size and speed.

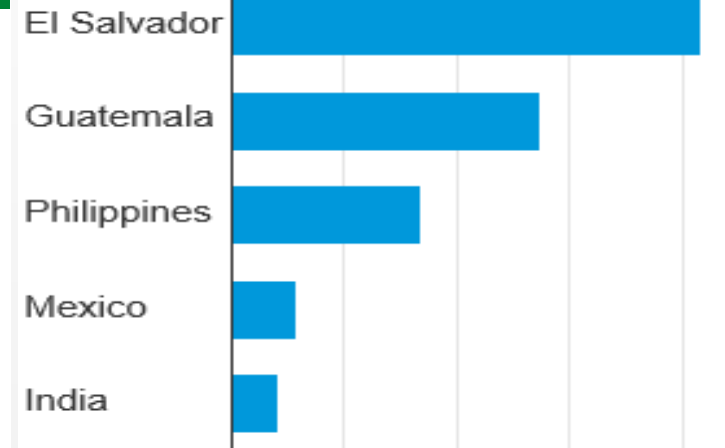


Sources: Bloomberg Finance L.P.; EPFR Global; Haver Analytics; Institute of International Finance; and IMF staff calculations.

INTERNATIONAL MONETARY FUND

3

Remittance as % of GDP



Institute of International Finance

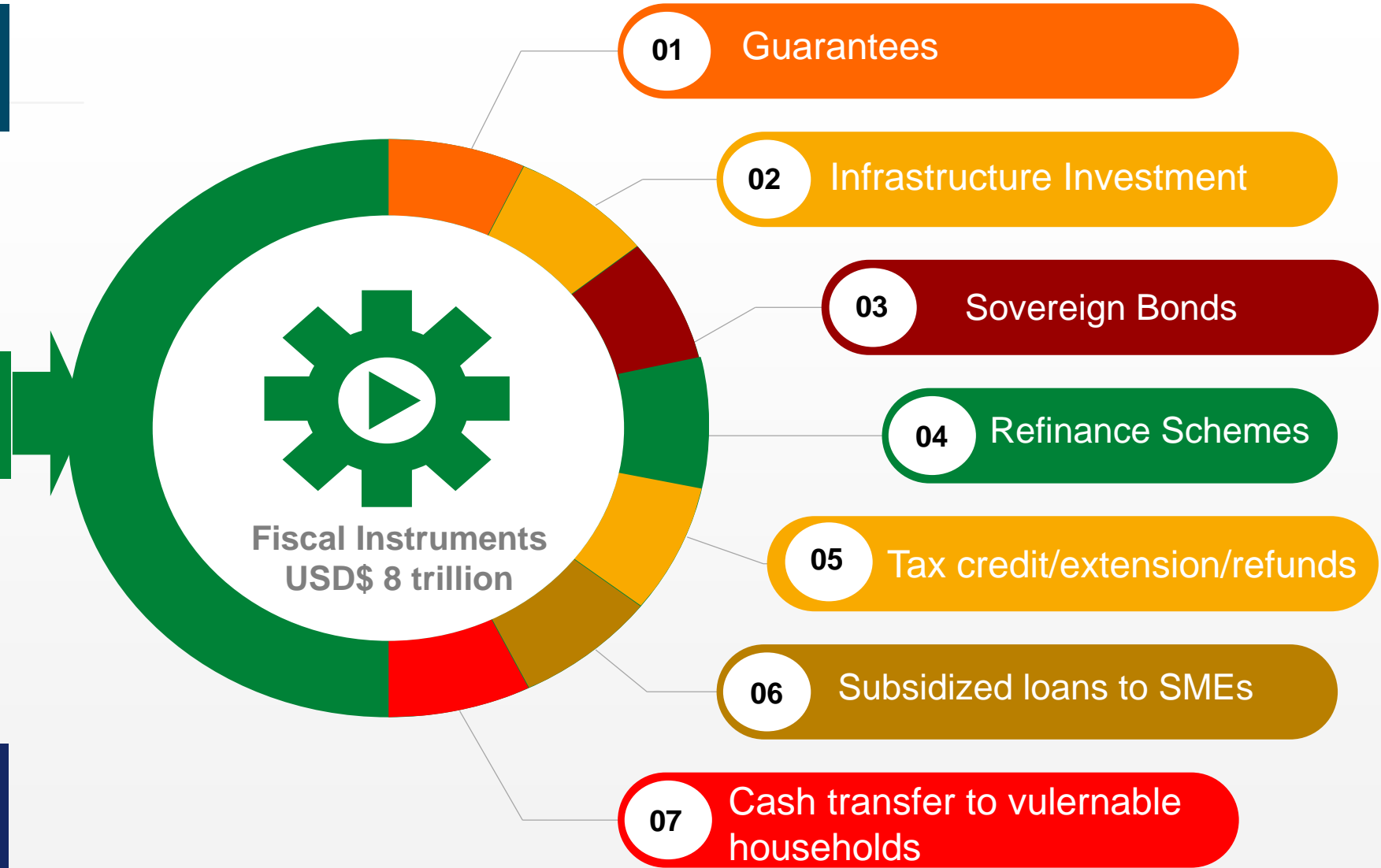
4

# From Crisis Management to Macroeconomic Stimulus

Monetary

Fiscal

BoP



9 INDUSTRY, INNOVATION AND INFRASTRUCTURE



11 SUSTAINABLE CITIES AND COMMUNITIES



8 DECENT WORK AND ECONOMIC GROWTH



13 CLIMATE ACTION



7 AFFORDABLE AND CLEAN ENERGY



12 RESPONSIBLE CONSUMPTION AND PRODUCTION



1 NO POVERTY



# COSTA RICA NDC INVESTMENT PLAN: 28 Lines of Action

Low carbon and climate resilient cities

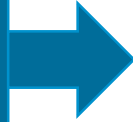
Climate-smart rural territories

Integral and adaptive water resource management and territories



BY 2030 CLEAN TRANSPORT:  
ELECTRIFICATION OF PUBLIC  
AND PRIVATE TRANSPORT

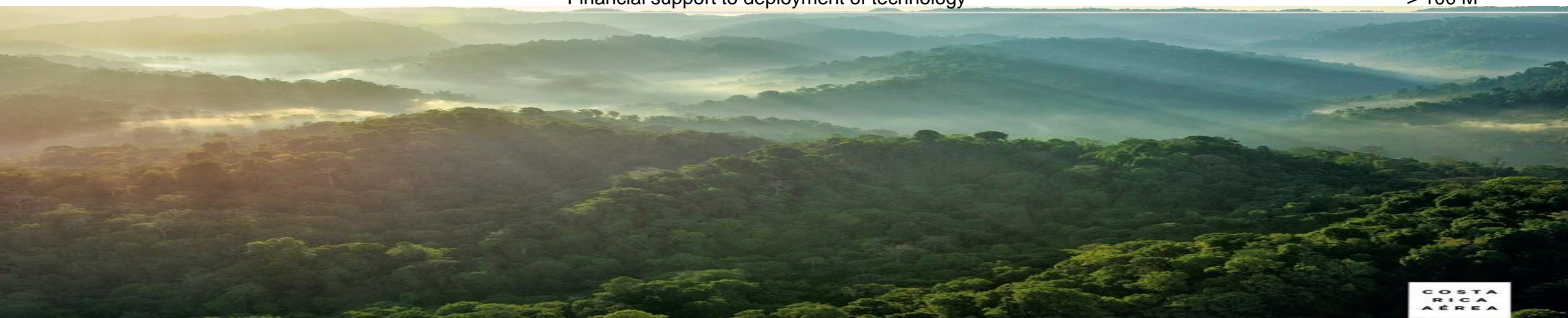
Investment needs



- Development Co-benefits
- Reduced local pollution and reduction of health costs
  - Substitution of fossil fuels
  - Contribute to a sustainable transport system and reduced commuting time



Activity	Estimated costs in US\$
Developing an incentives scheme	Up to 500 k
Planning charging station network and communication platform	Up to 500 k
Business model for infrastructure development and promotion of e-vehicles	Up to 1 M
Capacity building activities	Up to 500 k
Vehicle disposal	= 10 M
Piloting public e-vehicles	Up to 2,5 M
Investments in charging stations and communication platform	> 50M
Financial support to deployment of technology	> 100 M



# What does the climate finance landscape look like post COVID?

## Entry Point: 01

Join the net zero 2050 club

## Entry Point: 02

Deliver on national climate action plans

## Entry Point: 03

Ride on the fiscal stimulus instruments

## Entry Point: 04

Embed “green” in V/U/L shaped recovery



## Keep in touch



[www.ndcpartnership.org](http://www.ndcpartnership.org)



[@ndcpartnership](https://twitter.com/ndcpartnership)



[linkedin.com/company/ndcpartnership](https://www.linkedin.com/company/ndcpartnership)



[Jahan.Chowdhury@ndcpartnership.org](mailto:Jahan.Chowdhury@ndcpartnership.org)



[facebook.com/ndcpartnership](https://facebook.com/ndcpartnership)



[@ndcpartnership](https://www.instagram.com/ndcpartnership)